

TOTAL COLIFORM

INDICATOR BACTERIA

TEST KIT

4-3616

A solid black rectangular bar located at the bottom right of the page, below the product number.

The Coliform Indicator Test Kit utilizes an easy-to-use, disposable 5-tube method to indicate the presence of Total Coliform Bacteria in a drinking water supply. The water sample is placed in test vials containing special coliform indicating tablets and stored at room temperature for a predetermined time period. After the required storage period, the vials are examined to determine the presence of coliform bacteria.

Carefully read the instructions completely before attempting to collect a sample or run the test.

CONTENTS

Each kit contains 5 glass tubes, marked at 10 mL. Each tube contains one Coliform Test Tablet [4890]. A sterile Water Sampling Bag [2-2197] containing a dechlorinating tablet is included for chlorine removal.



*Reagent is a potential health hazard.

READ SDS: lamotte.com

Emergency information:

Chem-Tel USA 1-800-255-3924

Int'l, call collect, 813-248-0585

WARNING! This set contains chemicals that may be harmful if misused. Read cautions on individual containers carefully. Not to be used by children except under adult supervision.



INTRODUCTION:

The Coliform Test Tablets [Code 4880] contain nutrients to support the growth of coliform bacteria, a gelling substance, and a pH indicator. If coliform organisms are present in the sample, gas will be generated as a result of the bacteria metabolizing the nutrients in the tablet. This gas will be trapped in the gelling substance and cause the gel to rise in the tube. The pH indicator may change color from red to yellow as further evidence of coliform bacteria activity.

Suggestion: As the test requires a 44-48 hour incubation time, sample at a time period convenient to the user to read the end result.

STORAGE

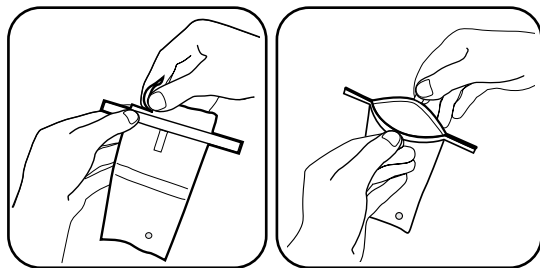
The unused kit should be stored at room temperature and out of direct sunlight. Keep away from children. This product is to be used for water analysis tests only.

CHLORINE RESIDUAL PRECAUTIONS

Water samples with chlorine residuals tend to suppress the growth of coliform bacteria when used with this kit. A sterile Water Sampling Bag with a dechlorinating agent [2-2197] is provided to collect the sample and neutralize any chlorine which may be present in the water. See page 4.

SAMPLE COLLECTION & TEST PROCEDURE

1. Determine the sample source, i.e. water spigot, faucet, system sample valve, etc.
2. Soak a cotton ball or gauze with household alcohol and wipe the entire water outlet area of the spigot, faucet or test valve. Pay particular attention to faucet aerator screens and mixers.
3. Allow tap [cold water] to run for 2 to 3 minutes or until the line is flushed.
4. Reduce the tap water flow to a rate that will fill the Water Sampling Bag [2-2197] slowly without splashing. Tear off the top of the bag at the scored line and pull the tabs outward to open the bag. Do not touch the bag opening or inner surface.

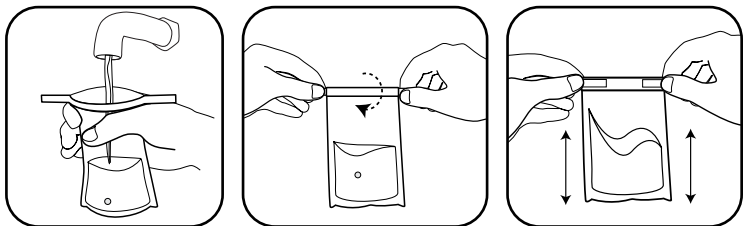


Caution: Do not allow the tablet to fall out of the bag.

5. Fill the bag to the 4 oz fill line. Pull the wire ends to close and whirl the bag for three complete revolutions. Shake the bag to dissolve the tablet.
6. Remove all 5 tubes from the display package and remove the caps.

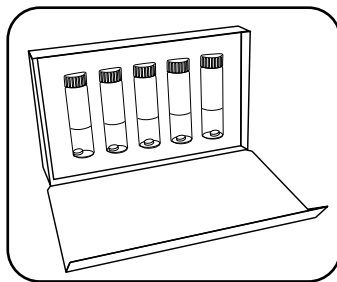
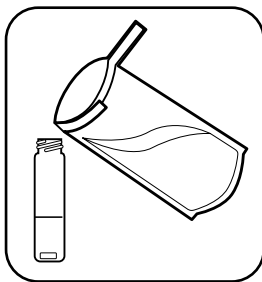
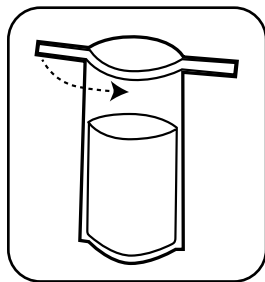
NOTE: Do not remove the tablets from tubes.

CAUTION: To avoid contamination, do not touch the inner surface of the caps and tubes, or handle the tablet.



7. Unwhirl the bag and pull the tabs outward to open the bag. Fold one tape wire inward to form a spout. Carefully fill all 5 tubes to the 10 mL line with the water sample. Replace the caps tightly. Do not mix or shake tubes.
8. Stand the carton upright and place all 5 tubes into the display package. All tubes should now be standing vertically with the tablet at the bottom of the tube. The tablet should lie flat on the bottom of each tube.
9. Store the tubes at room temperature, out of direct sunlight, for 44-48 hours. The air temperature should be fairly constant and between 70°- 85° F [21° - 29° C]. While the tubes can be incubated at room temperature, incubation at 44.5° C [112° F] may accelerate growth and result in a more rapid test result.

NOTE: Do not disturb, handle, or shake the tubes during the designated incubation time period. If these storage conditions are not followed precisely, the results of the test may vary and may not be valid



TOTAL COLIFORM TEST RESULTS

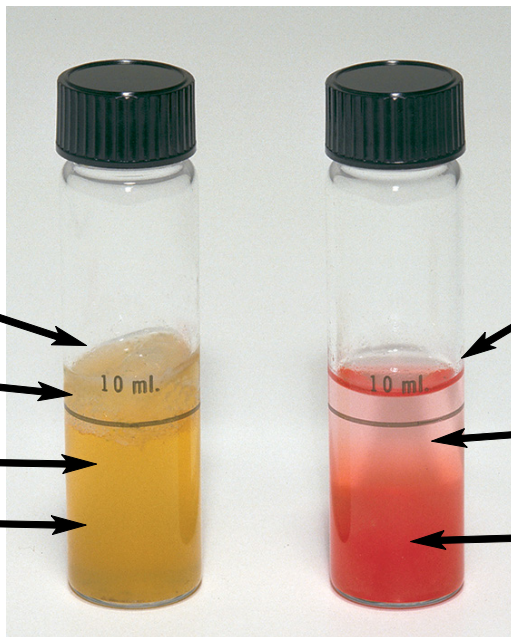
POSITIVE TEST

Gel rises to surface

Many gas bubbles present

Liquid below gel is cloudy

Indicator turns yellow†



NEGATIVE TEST

Liquid above gel is clear

Indicator remains red or turns yellow† with few gas bubbles

Gel remains at bottom of tube

† NOTE: Both the yellow color AND gas bubbles must be present for a positive test result.

RESULTS ANALYSIS

A positive result in any one of the five tubes should be regarded as a potential coliform bacterial contamination. If a positive result is found in two or more tubes, there is a potential for a serious bacterial contamination problem. Further steps should be taken to validate these results by a certified bacteriological laboratory. Water samples with positive screening results may require additional laboratory testing to define specific health risks.

DISPOSAL

After the results are recorded, dispose of the inoculated tubes as follows:

- Remove all of the tubes from the display package.
- One tube at a time, remove the cap and add approximately 1 mL [or 1/3 teaspoon] of household bleach [chlorine bleach] to the tube and immediately recap. Follow the above procedure for all of the remaining tubes.
- Return the tubes to the tray and again stand upright. Let tubes stand for approximately 4 hours.
- Dispose of the tubes and package as required by local jurisdiction. Do not open the tubes or attempt to clean them for reuse.



Helping People Solve Analytical Challenges

802 Washington Ave · Chestertown · Maryland · 21620 · USA
800-344-3100 · +1 410-778-3100 [Outside U.S.A.] · Fax 410-778-6394
Visit us on the web at www.lamotte.com

©2022 LaMotte Company | 64-3616 | 11.03.22