



# Water Conditioning

## Testing Products







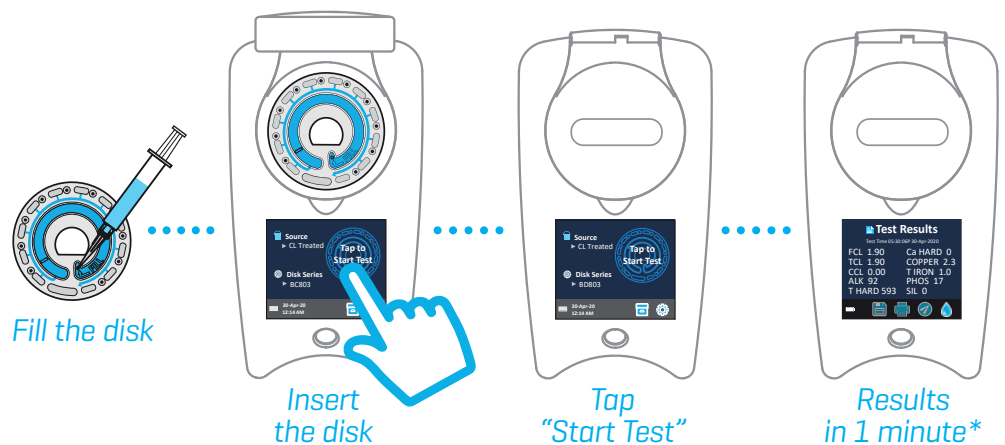
Every now and then a technology emerges that changes people's lives. For people who test water, that time is now.



The innovative WaterLink® Spin Touch® DW photometer does all your drinking water testing for you. Each sealed reagent disk contains the precise amount of reagent needed to run a complete series of tests. Just fill one unique Spin reagent disk with less than 3 mL of water and all your vital tests are done automatically—in just 60 seconds!

It's the most advanced system for precise use of wet chemistry methods ever produced. Now analysts can achieve precision without time consuming test and clean-up procedures. This ground-breaking analysis system is so simple anyone can use it! No vials to fill, no prep time, no guessing!

## 9 Tests in 60 Seconds!



**So Simple! So Fast! So Precise!**

## WaterLink® Spin Touch® DW

Order Code 3585

Includes: Photometer, Instruction Manual, Quick-Start Guide, 3 Syringes, Meter Check Disk, Disk Cover, Sample Bottle, USB Cord with USB Wall Adapter, Carrying Case (Disks sold separately)

Optional Printer:  
Code 5-0066



For more information

### Reliable Results

- Virtually eliminates User-Error
- Pre-Measured Reagents
- Exact Reaction Times and Auto-Blanking
- Meter Calibration Check System
- New 6-Wavelength Photometer

### Super Fast & Simple

- 1 Minute for Treated Water Disk and 2 Minutes for Well Water Disk
- Fill Disk and Insert > Select "Start Test" > Read Results

### Auto-Record Keeping

- Stores Test Dates, Times, Results

### Stand-Alone

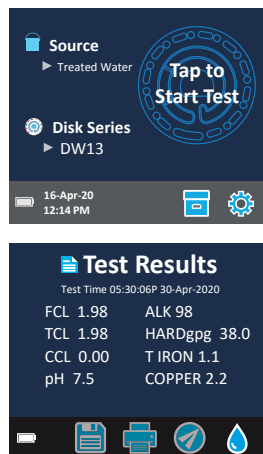
- No Computer, Smartphone, or Tablet Needed
- Touchscreen Operation
- Communicate through Bluetooth® or USB

### Rugged and Portable

- Innovative Water-Resistant Housing
- Internal, Rechargeable Batteries
- Optional Heavy-Duty, Waterproof Carrying Case with Foam Inserts

### Optional Software

- WaterLink Solutions™ and WaterLink® Connect2, learn more at [www.softwarecenter.lamotte.com](http://www.softwarecenter.lamotte.com).



<b>Instrument Type:</b>	Centrifugal Fluidics Photometer
<b>6 Wavelengths:</b>	390 nm, 428 nm, 470 nm, 525 nm, 568 nm, 635 nm
<b>Display:</b>	Color Capacitive Touchscreen, 3.5", 320 X 240 pixel resolution
<b>Batteries:</b>	Lithium Ion, Rechargeable (Full Charge in 6 hours), 100-150 tests per charge
<b>Communication:</b>	Bluetooth, USB-C
<b>Calibration:</b>	Factory Set, Field Calibration via Internet Connection
<b>Data Storage:</b>	Last 250 Test Results with Date and Time
<b>Water Resistance:</b>	Rubber Over-molded Base, Rubber USB Port Plug, Gasketed Display and Hinge
<b>Size &amp; Weight:</b>	8.5 L x 4.9 W x 4.1 H inches, 1.74 lb 22.6 L x 12.7 W x 11.4 H cm, 0.79 kg
<b>Operation:</b>	Single On/Off/Reset Button with Indicator Light
<b>Firmware:</b>	Internet updateable (New Test, New Test Calibrations, etc.), requires USB connection to Windows® PC
<b>Printer:</b>	Optional Bluetooth Printer (Code 5-0067); 384 dots per line at 8 dots/mm resolution

Treated Water Series DW13		Well Water Series DW21	
Code 4336-H   50 pack		Code 4337-H   50 pack	
Free Chlorine	0-15 ppm	pH	4.5-8.6 pH
Total Chlorine	0-15 ppm	Total Hardness	0-70 ppb, 0-1,200 ppm
Combined Chlorine	0-15 ppm	Total Iron	0-6 ppm
pH	6.4-10.0 pH	Ferric Iron	0-6 ppm
Total Hardness	0-70 ppb, 0-1200 ppm	Ferrous Iron	0-6 ppm
Total Iron	0-6 ppm	Copper	0-6 ppm
Copper	0-6 ppm	Nitrate [NO <sub>3</sub> ]	0-45 ppm
Total Alkalinity	0-250 ppm	Nitrite [NO <sub>2</sub> ]	0-2 ppm
		Total Alkalinity	0-250 ppm



# Multi-Parameter Outfits



Code 2101

## Digital Outfit ColorQ DW\*\*

### ColorQ DW Code 2101

The unique, multi-test waterproof Bluetooth ColorQ 2x drinking water hand-held photometer measures five test factors— Hardness, pH, Iron, Nitrate, Free and Total Chlorine —directly on a digital display. Featuring an innovative dual-optic design with wider pathlength, the ColorQ 2x provides increased accuracy. The photometer eliminates the need to visually determine slight color variations or use look-up tables, thus taking the guesswork out of water analysis.

	Hardness	pH	Iron	Nitrate	Chlorine Free & Total
Range	1-23 g20 total,pg*	5-9	0-3.0 ppm*	0-15 ppm	0-10 ppm
Resolution	1 gpg	0.5 pH	0.5 ppm	1 ppm	0.2 ppm
Number of Tests	50	70	50	50	50

\*Higher Concentrations by dilution; instructions included. \*\*⚠️ WARNING: Cancer - [www.P65Warnings.ca.gov](http://www.P65Warnings.ca.gov)

## Visual Kits

Model AR outfits offer the simplest, most economical way to measure water quality factors in the field. Drop Count and Octa-Slide tests can be reliably performed by non-technical personnel. Ideal for service applications. Units easily customized upon request.



Code 3590-03

## Visual Kits\*\*

Code 4783-03 · Shipping Code (weight/lbs.): R1 [7] Reagent Refill · R-4783-02

Popular AR-02 outfit provides tests for Hardness, Iron, and pH. Drop Count test for Hardness (10 ppm or 1 gpg/drop). Octa-Slide tests for Iron (0.5-10 ppm) and pH (5.0-10). Includes 100 tests for Iron and 50 tests each for pH and Hardness.

\*\*⚠️ WARNING: Reproductive Harm - [www.P65Warnings.ca.gov](http://www.P65Warnings.ca.gov)

Code 3590-03 · Shipping Code (weight/lbs.): R1 [7] Reagent Refill · R-3590-01

The Model AR-42 has the same test range for pH, Hardness, and Iron as the AR-02, but it also is equipped to test for Sulfide (0.2-20 ppm). Includes 50 tests for pH, Hardness, and Sulfide; 100 for Iron.

\*\*⚠️ WARNING: Cancer and Reproductive Harm - [www.P65Warnings.ca.gov](http://www.P65Warnings.ca.gov)

Ship Codes: (NH) Non-Hazardous Material - No Fees · (R1) Small Qty. Hazardous Material - No Fees · (R2, R3, & LQ) Hazardous Material - Air Fees Only  
(HF) Hazardous Material - Air & Ground Fees

Need guidance on product selection? Contact our technical support at 800-344-3100 or [tech@lamotte.com](mailto:tech@lamotte.com)

# Water Quality Demo Outfits

## WaterLink® Spin Touch® DW Sales Demonstration Outfit

Featuring the WaterLink® Spin Touch® DW

Order Code 4-3085



Code 4-3085



- WaterLink® Spin Touch® DW photometer
- Duo-Soft Model Water Softener
- Pump and Connection Tubing
- Soap Consumption Demonstration
- Lockable, Foam-Lined Carrying Case

### Optional Add-On Kits

- Precipitation Demonstration (0.2-3.0 ppm) · 50 Tests, Order Code 8124
- TRACER PockeTester TDS/Salinity/Conductivity/Temp Order Code 1749 [see page 6]

Test disks are not included. See page 3 for disks.



Code 8124

...dance on  
...election?  
...r technical  
...staff at  
...-3100 or  
...lamotte.com

### AT Visual Series\*\*



AT with Model S  
Code 4-3003-02



AT with DuoSoft  
Code 4-3015-01

### AT Visual Kit Tests (5 Included)

	Hardness	pH	Iron	Precipitation	Soap Consumption
Range	1 drop = 10 ppm/ 20 ppm/10 gpg	5.0-10 ppm	0.5-10 ppm*	Before/After	Before/After
# of Tests	100	100	100	100	100

\*Higher Concentrations by dilution; instructions included. \*\* ⚠️ WARNING: Cancer and Reproductive Harm - www.P65Warnings.ca.gov

### Optional Add-On Kits and TDS Meter:

- Chlorine (0.2-3.0 ppm) · 50 Tests, Code 4-3006-01
- Nitrate (0-15 ppm) · 50 Tests, Code 4-3004-01
- Salinity, TDS, Con Tracer Meter, Code 1749 [see page 4]



# Water Quality Demo Outfits

Refills Available!



## Demonstration Water Softeners

Generate high-quality softened water in seconds. Clear acrylic column is durable and visually impressive. Flexible intake and outlet hoses have plastic clamps that prevent spillage. Rubber adapter on intake hose attaches to faucet. Available in four different models to suit your demonstration needs.

### Model S

**Order Code: 1002**

**Resin Refill Code: R-1002**

An 8" resin column [10.25" total height] that softens up to 70 gallons of medium hard water [7 gpg hardness] before requiring regeneration or fresh resin. Model S softener is furnished in the Model AT-38 and AT-Q-38 outfits.



### DuoSoft

**Order Code: 1022-FLD**

**Carbon and Resin Refill Code: R-1022**

The LaMotte twin-chambered softener clearly demonstrates the advantages of advanced two-part treatment systems. Customize one today to demonstrate the true effectiveness of your treatment system.

- Treat tapwater in one pass with a two-chambered softener
- A filled Duo-Soft is furnished in the Model AT-40 and AT-Q-40 outfit
- Also available: Order Code 1022 DuoSoft unit empty to fill with your choice of media.

### Quick Connect Connectors

**Order Code: 3-1023M**

Quick Connect Male Fitting.

**Order Code: 3-1023F**

Quick Connect Female Fitting.

Now with Quick Connect Couplings!

## Recommended Pumps and Tubing

**Order Code: 9430**

Large Submersible Pump for DuoSoft Softener 1022.

**Order Code: 9480**

1/2" Tubing w/Quick Connect fitting for Large Pump [code 23384].

**Order Code: 9440**

Small Submersible Pump for Model S Softener 1002.

**Order Code: 3-1025-tubing**

1/4" Tubing w/Quick Connect fitting for Small Pump [code 23379]



## TRACER PockeTester TDS/Salinity/Conductivity/Temp

Code 1749

- Easy to use with push-button calibration
- Automatic temperature compensation
- TDS 0-9,900 ppm; Salinity 0-9,900 ppm; Con 0-19.99 mS; Temp 32-149 F
- Memory can store up to 25 readings

# Insta-TEST® Test Strips



Code 2992



For QUICK & EASY water quality profiles!

## Single Factor Test Strips

Test Factor	Code	Range [ppm]	Values [ppm]	# of Tests Per Factor/ Per Vial
Alkalinity	2997	0-180	0, 40, 80, 120, 180	50
Chlorine, Free, Low Range	2964-G	0-10	0, 0.5, 1, 3, 5, 10	25
Chlorine, Total, Low Range	2963LR-G	0-10	0, 0.1, 0.25, 0.5, 1, 3, 10	25
Chlorine, Free, High Range	3031	0-800	0, 50, 100, 250, 500, 800	50
Chlorine, Total	2979	0-5	0, 0.5, 1, 3, 5	50
Hardness, Low Range	2981	0-180	0, 30, 60, 120, 180	50
Iron	2935-G	0-5	0, 0.3, 0.5, 1, 3, 5	25
pH, Wide Range	2974	4-10 [pH]	4, 5, 6, 7, 8, 9, 10	50

## Multi-Factor Test Strips

Test Factor	Code	Range [ppm]	Values [ppm]	# of Tests Per Factor/ Per Vial
Chlorine (Free & Total)	3027-G	0-10 (FCI & TCI)	0, 0.5, 1, 3, 5, 10	25
Drinking Water 6-Way	2933-G	0-10 (FCI)	0, 0.5, 1, 3, 5, 10	25
		0-10 (TCI)	0, 0.5, 1, 3, 5, 10	25
		4-10 (pH)	4, 5, 6, 7, 8, 9, 10	25
		0-400 (Hard)	0, 50, 100, 200, 400	25
		0-50 (Nitrate)	0, 5, 10, 25, 50 (NO <sub>3</sub> -N)	25
		0-10 (Nitrite)	0, 0.5, 1, 5, 10 (NO <sub>2</sub> -N)	25
Iron & Copper	2994	0-5 (Iron)	0, 0.3, 0.5, 1, 3, 5	25
		0-3 (Copper)	0, 0.3, 0.6, 1, 3	25
pH, Hardness, & Total Chlorine	2993-G	4-10 (pH)	4, 5, 6, 7, 8, 9, 10	25/100
		0-400 (Hard)	0, 50, 100, 200, 400	25/100
		0-10 (TCI)	0, 0.5, 1, 3, 5, 10	25/100
Iron, pH, Hardness, & Total Chlorine	2992	0-5 (Iron)	0, 0.3, 0.5, 1, 3, 5	25
		4-10 (pH)	4, 5, 6, 7, 8, 9, 10	25
		0-400 (Hard)	0, 50, 100, 200, 400	25
		0-10 (TCI)	0, 0.5, 1, 3, 5, 10	25
Wide Range (pH & Total Chlorine)	2987-G	4-10 (pH)	4, 5, 6, 7, 8, 9, 10	25
		0-50 (TCI)	0, 1, 5, 10, 20, 50	25
Nitrate & Nitrite	2996	0-50 (Nitrate)	0, 5, 10, 25, 50 (NO <sub>3</sub> -N)	50
		0-10 (Nitrite)	0, 0.5, 1, 5, 10 (NO <sub>2</sub> -N)	50

Code 2964-G

Code 2979

Code 2987

Code 2996

For additional Test Strips, please visit [lamotte.com](http://lamotte.com) or call customer service for details.

# Insta-TEST<sup>®</sup> Drinking Water Test Strips

## Packaged Drinking Water Test Strips

Order Code 4-2936FP-100 · Shipping Code [weight/lbs.]: NH [3]

Each LaMotte Drinking Water Test Strip tests 5 important water quality parameters for both municipal and well water sources in only seconds! With a 2-second dip, each strip determines Free Chlorine, Total Chlorine, Total Hardness, pH, and Nitrate.

### Each plastic packet contains:

- 2 individually packed test strips (2-year shelf-life)
- Full color instructions and color chart



Test Factor	Range [ppm]	Values [ppm]
Free Chlorine	0-10 [FCI]	0, 0.5, 1, 3, 5, 10
Total Chlorine	0-10 [TCI]	0, 0.5, 1, 3, 5, 10
Total Hardness	0-400 [Hard]	0, 50, 100, 200, 400 [ppm]; 0, 3, 5.8, 11.7, 23 [gpg]
pH	4-10 [pH]	4, 5, 6, 7, 8, 9, 10
Nitrate	0-50 [Nitrate]	0, 5, 10, 25, 50 [NO3-N]

Code 4-2936FP-100

## Lead Screening Test Strips Kit

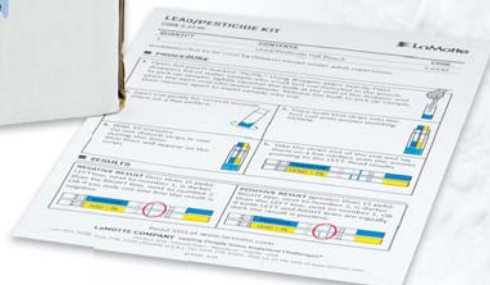
Order Code 5-0140 · Shipping Code [weight/lbs.]: R1 [4]

LaMotte Company now offers an affordable, safe, and reliable screening test to identify lead in drinking water. Lead is still found in old pipes, solder and service lines. Corrosive water can leach lead into water supplies.



Code 5-0140

Includes  
10 Tests!

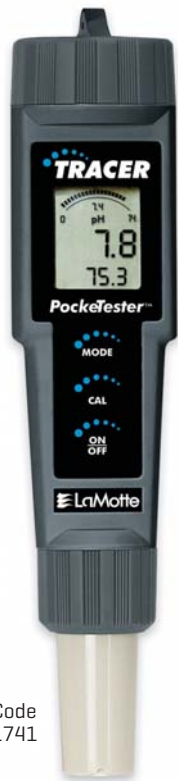


In only 10 minutes the analyst can detect lead levels above 15 ppb—the EPA action level. Simply immerse a strip in a water sample and read after a 10 minute waiting period.

This multi-test package is designed for the professional monitoring multiple sites. The LaMotte Lead in Water Kit includes 10 test packs with one diagrammed instruction.

- Each test comes in a sealed pouch with a test vial and dropper
- Simple test protocol: immerse, wait 10 minutes, and read
- Easy analysis—1 Line or 2 Line result indicates result
- Detects Lead to EPA action level of 15 parts per billion [ppb]





Code 1741



Code 1756

## LaMotte TRACER Meters

- Readings are not affected by sample color or turbidity
- Extra bold display includes an analog bar graph feature
- Memory can store up to 15 readings
- Meters also display sample temperature
- Unit identifies which probe is in use and retains calibrations
- Waterproof design

Model	pH	ORP	Fluoride (uses code 7024-J tablets)	
Code	1741	1742	1756	
Range [Accuracy]	pH: 0-14 [±0.01]	ORP: ±999mV [±4mV]	Fluoride: 0.1 to 10 ppm [±3% rdg]	Temp: 0°-60°C/32°-140°F [±1°C/1.8°F]

Model	EC/TDS/Salt/Temp			
Code	1749			
Range [Accuracy]	Conductivity: 0-199.9 mS; 200-1999 mS; 2.00-19.99 mS [±2% FS]	TDS: 0-99 ppm; 100-999 ppm; 1000-9999 ppm [±2% FS]	Salinity: 0-99 ppm S; 100-999 ppm S; 1000-9999 ppm S [±2% FS]	Temp: -5°-90°C [±1°C/1.8°F]

Model	pH/TDS/Salt/CON/Temp			
Code	1766			
Range [Accuracy]	pH: 0-14 [±0.01]	Conductivity: 0-199.9 mS; 200-1999 mS; 2.00-19.99 mS [±2% FS]	TDS: 0-99 ppm; 100-999 ppm; 1000-9999 ppm [±2% FS]	Salinity: 0-99 ppm S; 100-999 ppm S; 1000-9999 ppm S [±2% FS]
				Temp: -5°-90°C [±1°C/1.8°F]

## 2020t/i Ratio Turbidity Meters

Code [2020t] 1974-T · Ship Code NH [6]

Code [2020i] 1974-I · Ship Code NH [6]

Industry-leading precision, sensitivity, and dependability in one of the most innovative handheld meters available on the market!

### Advanced Features:

- Lithium Ion rechargeable battery
- USB port
- 7 languages
- Backlit display
- EPA and ISO versions

Mode	Ratiometric	Nephelometric	Attenuation
Unit of Measure <b>2020t</b>	NTRU, NTU, ASBC, EBC	NTU, ASBC, EBC	AU, NTU, ASBC, EBC
Unit of Measure <b>2020i</b>	FNRU, NTU, ASBC, EBC	FNU, NTU, ASBC, EBC	FAU, NTU, ASBC, EBC
Range	0-1,000 NTRU/FNRU 0-17,500 ASBC 0-250 EBC	0-100 NTU/FNU 0-1,750 ASBC 0-25 EBC	0-2,000 AU/FAU 0-70,000 ASBC, 0-1,000 EBC
Resolution	0-10.99 NTRU/FNRU: 0.01 11.0-109.9 NTRU/FNRU: 0.1 110-1000 NTRU/FNRU: 1	0-10.99 NTU/FNU: 0.01 11.0-100.0 NTU/FNU: 0.1	0-2000 AU/FAU: 1
Accuracy	0-2.5 NTRU/FNRU: ±0.05 2.5-100 NTRU/FNRU: ±2% 100-1000 NTRU/FNRU: ±3%	0-2.5 NTU/FNU: ±0.05 2.5-100 NTU/FNU: ±2%	0-2000 AU/FAU: ±10 AU/FAU or 6%, whichever is greater
Detection Limit	0.05 NTRU/FNRU	0.05 NTU/FNU	10 AU/FAU
Reproducibility	0.02 NTRU/FNRU or 1%	0.02 NTU/FNU or 1%	1%
Range Selection	Automatic		
Light Source	2020t: Tungsten lamp 2300 °C ±50 °C 2020i: IR LED 860 nm ±10 nm, spectral bandwidth with 50 nm		
Detector	2020t: Photodiode, centered at 90° and 180°, maximum peak 400-600 nm 2020i: Photodiode, centered at 90° and 180°		



# Instrumentation

## DC1500 Chlorine Colorimeter Kit

Order Code 3240 (tablet) or Order Code 3240-LI (liquid)  
 Kit Refills: Order Code R-3240 (tablet) | Order Code R-3240-LI (liquid)

Available in Tablet  
 or Liquid Versions

### Features:

- Field & Lab Use: USB cable and wall adapter included; car charger optional
- Rechargeable battery: No need to buy batteries again
- EPA Compliant: Uses proper wavelength and DPD test method to meet EPA design specifications for NPDWR and NPDES chlorine monitoring programs (EPA 330.5 and Standard Method 4500)
- 0-4 ppm Chlorine: No need to select a low or high range. The DC1500 covers the entire critical chlorine range of 0-4 ppm with an MDL of 0.03 ppm.
- A Great Value: Complete, economical package! The DC1500 Chlorine Colorimeter Kit includes tablets for 100 tests or liquid reagents for 140 tests, six sample vials, and a sturdy carrying case.
- IP67 Waterproof Design: Designed with excessive exposure to moisture in mind, the DC1500 colorimeter delivers trouble-free performance
- Bold, backlit display
- European CE Mark
- USB port



STANDARD  
METHODS  
4500

IP67  
WATERPROOF

EPA  
330.5

2 YEAR  
WARRANTY

CE

durable  
CASE



See Additional Single Test Factor  
 DC1500 Colorimeters at [www.lamotte.com](http://www.lamotte.com)

### Meter Specifications

Readout:	160 x 100 backlit LCD, 20 x 6 line graphical display
Wavelength Accuracy:	±2% FS
Wavelength Bandwidth:	10 nm typical
Light Source:	LED
Detector:	Silicon photodiode with integrated interference filter
Modes:	Pre-programmed test, absorbance, %T
Languages:	English, Spanish, French, Portuguese, Italian, Chinese, Japanese
Sample Chamber:	25 mm diameter flat bottom test tubes
USB Port:	Mini USB
Power:	Lithium ion rechargeable battery, 3.7v, 2.5 x .75 inches, 1.7 oz. or USB computer cable or wall adapter
Battery:	Charge Life: Approx. 380 tests with backlight on to 1000 tests with backlight off.
Battery Life:	Approx. 500 charges
Auto Shut-off:	Disabled, 5, 10, 50 minutes
CE Mark:	Yes
Shipping Weight	8 lbs
Shipping Size [LxWxH]	17 x 16 x 9



## SMART<sup>®</sup>3 Colorimeter

Order Code 1910 (Reagents Systems sold separately)

The user-friendly SMART<sup>®</sup>3 Colorimeter is the ideal direct reading colorimeter for complete on-site water analyses. All pre-programmed tests can be run on this compact instrument and each test features automatic wavelength selection. The entire multi-LED optical system is embedded in the light chamber and optimized for LaMotte test reagent systems. The analyst can simply select the test and put in the sample with reagent. The microprocessor, which selects the wavelength, also allows the user to load up to 25 tests for analyzing custom reagent systems. LaMotte stands behind every system we provide.

Range:	0-125%T
Resolution:	1% FS
Accuracy:	2% FS
CE Mark:	Yes
Light Source:	LED/Filter setup; 428nm, 525nm, 568nm, 638nm
Detector:	Photodiode
Display:	160x100 Backlight LCD, 20x4 line graphics display
Sample Cell:	25 mm round cell, 10 mm square cuvette, 16 mm COD tubes
Datalogging:	Up to 500 data points, USB transfer, time and date stamped
Keypad:	6-button mechanical
Calibration:	Factory set - user adjustable
Power:	USB computer/power charger or Lithium Ion rechargeable battery, 3.7V, 2.5" x 0.75", 1.7 oz.
Dimensions:	19.05 x 8.84 x 6.35 cm; 7.5 x 3.5 x 2.5 inches
Weight:	15 ounces
Bandwidth:	10 mm typical

### Additional advancements include:

- USB interface
- Optional software for data storage and manipulation
- Lithium ion rechargeable battery, USB computer adapter is included
- USB port

### Accessories/replacement items:

- COD/UDV adapter, Code 1724
- 6 sample tubes, Code 0290-6
- USB Cable, Code 1720
- USB Power Plug, Code 1721
- Car Charger, Code 5-0132



Over 60 tests available!



SMART3 Reagent Systems New tests are being developed for the SMART3. Please contact us for information regarding additions of new tests.

Test Factor	Test Method [# of reagents]	Test Factor	Test Method [# of reagents]
Alkalinity, Tablet	Colorimetric [1]	Iodine	DPD Tablets [2]
Ammonia Nitrogen HR	Nesslerization [2]	Iron	Bipyridyl [2]
Barium	Barium Chloride [1]	Manganese LR	PAN [3]
Boron	Azomethine-H [2]	Manganese HR	Periodate [2]
Bromine	DPD Tablets [3]	Methylethylketoxime	Iron Reduction [3]
Cadmium	PAN [4]	Molybdenum HR	Thioglycolate [3]
Chloride TesTab	Argentometric [1]	Nickel	Dimethylglyoxime [6]
Chlorine [Free & Total]	DPD Tablets [3]	Nitrate Nitrogen LR	Cadmium Reduction [2]
Chlorine Dioxide	DPD tablet/Glycine [2]	Nitrite Nitrogen LR	Diazotization [2]
Chromium [Hexavalent]	Diphenylcarbohydrazide [1]	Nitrogen, Total*	Chromotropic Acid/ Digestion [6]
Chromium [Total, Hex & Trivalent]	Diphenylcarbohydrazide [5]	Oxygen Scavengers	Iron Reduction
Cobalt	PAN [3]	Ozone	DPD [4]
COD LR with Mercury*	Digestion [1]	pH CPR	Chlorophenyl Red [1]
COD LR without Mercury*	Digestion [1]	pH PR	Phenol Red [1]
COD SR with Mercury*	Digestion [1]	pH TB	Thymol Blue [1]
COD SR without Mercury*	Digestion [1]	pH, Tablet	Phenol Red [1]
COD HR with Mercury*	Digestion [1]	Phenol	Aminoantipyrine [3]
COD HR without Mercury*	Digestion [1]	Phosphate LR	Ascorbic Acid Reduction [2]
Color	Platinum Cobalt [0]	Phosphate HR	Vanodomolybdo vanadate Acid [1]
Copper BCA - LR	Bicinchoninic Acid [1]	Phosphorus, ppb	Ascorbic Acid/Digestion [5]
Copper - Cuprizone	Cuprizone [2]	Phosphorus, Total - LR*	Ascorbic Acid/Digestion [5]
Copper DDC	Diethyldithiocarbamate [1]	Phosphorus, Total - HR*	Molybdo vanadate/ Digestion [5]
Cyanide	Pyridine-Barbituric Acid [5]	Potassium	Tetraphenylboron [2]
Cyanuric Acid, Tablet	Melamine [1]	Silica LR	Heteropoly Blue [4]
DEHA	Iron Reduction [3]	Silica HR	Silicomolybdate [3]
Dissolved Oxygen [DO]	Winkler Colorimetric [3]	Sulfate HR	Barium Chloride [1]
Erythorbic Acid	Iron Reduction [3]	Sulfide LR	Methylene Blue [3]
Fluoride	SPADNS [2]	Surfactants	Bromthymol Blue [3]
Hardness, Total, Tablet	Colorimetric [1]	Tannin	Tungsto-Molybdophosphoric Acid [2]
Hydrazine	p-dimethylaminobenzaldehyde [2]	Turbidity	Absorptimetric [0]
Hydrogen Peroxide	DPD [2]	Urea	Urease/Salicylate [4]
Hydroquinone	Iron Reduction [3]	Zinc LR	Zincon [6]

\* Requires COD Adapter Code 5-0087 and Heater Block.

Ship Codes: NH - Non Hazardous, No Fees; HF - Hazardous Materials, Air & Ground Fees; R1 - Small Quantity Hazardous Materials, No Fees; R2, R3, & LQ - Hazardous Materials, Air Fees Only  
 Prop 65: C: ⚠️ WARNING Cancer - www.P65Warnings.ca.gov/product; R: ⚠️ WARNING Reproductive Harm - www.P65Warnings.ca.gov/product;  
 B: ⚠️ WARNING Cancer and Reproductive Harm - www.P65Warnings.ca.gov/product

# Individual Test Kits



Specific to your treatment and monitoring needs. Each individual kit is furnished in a compact carrying case with all labware, accessories, and reagents needed to perform the test. Step-by-step instructions included.

A Reagent Refill Package may be available and can be ordered by prefixing "R-" to the code number of the kit.

**Convenient REAGENT REFILLS!**  
When ordering, place "R-" before the kit code

Code	Test Method	Range/Sensitivity	# Tests	Shipping Codes (weight/lbs.)	Health Hazard
<b>Alkalinity</b>	Kits use titrations with standard acid to the phenolphthalein [P] and/or total [T] alkalinity endpoint.				
7240-02	Dropper Bottle for P&T Alkalinity	1 drop = 10, 25, or 50 ppm as CaCO <sub>3</sub>	100 at 500 ppm	R1 (2)	C, R
4491-DR-01	Direct Reading Titrator for Total Alkalinity	0-200 ppm as CaCO <sub>3</sub> in 4 ppm increments	50 at 200 ppm	NH (1)	
3467-01*	Direct Reading Titrator for P&T Alkalinity	0-200 ppm as CaCO <sub>3</sub> in 4 ppm increments	50 at 200 ppm	R1 (1)	C
<b>Aluminum</b>	A pink to red color will form when aluminum reacts with Eriochrome Cyanine R at pH 6.				
3569-01	Octa-Slide 2 Comparator	0.0, 0.1, 0.15, 0.2, 0.25, 0.3, 0.4, 0.5 ppm Al <sup>3+</sup>	50	NH (1)	
<b>Bacteria</b>	LaMotte offers the BART™ (Biological Activity Reaction Tests) line of kits for various microbiological analyses. Results are obtained by observation after 2-8 days of room temperature incubation. Please contact us for more information. (see also Coliform)				
5-0024	Iron Related Bacteria (IRB)	Semi Quantitative	9	NH (1)	
5-0026	Slime Forming Bacteria (SLYM)†	Semi Quantitative	9	NH (1)	
5-0025	Sulfate Reducing Bacteria (SRB)	Semi Quantitative	9	NH (1)	
5-0032	Combo Pack (Iron, Sulfate Reducing, Slime Forming)		3 each	NH (1)	
<b>Chloride</b>	The argentometric method employs a chromate indicator and silver nitrate titrant. Hydrogen peroxide is included to eliminate sulfite interference.				
7172-02	Dropper Bottle	1 drop = 10, 25, 50 ppm	120 at 10 ppm	R1 (1)	C, R
<b>Chlorine</b>	Free, combined, and total chlorine may be determined using DPD with either colorimetric or titrimetric methods. These determinations are generally limited to concentrations of 0-10 ppm, although the FAS titration can test higher concentrations with the addition of more DPD indicator.				
3308-01*	Octa-Slide 2 Comparator for Free & Total	0.2, 0.4, 0.6, 0.8, 1.0, 1.5, 2.0, 3.0 ppm Cl	50	NH (1)	
3312-01*	Octa-Slide 2 Comparator for Free & Total	0.1, 0.2, 0.3, 0.4, 0.5, 0.6, 0.8, 1.0 ppm Cl	50	NH (1)	
3314-01*	Octa-Slide 2 Comparator for Free & Total	Low: 0.1-1.0 ppm Cl high: 1.0-6.0 ppm Cl	100	NH (1)	
3176-02*	Direct Reading Titrator for Free & Total	0-10 ppm Cl in 0.2 ppm increments	50 at 10 ppm	R1 (2)	C, R
3240*	Digital Colorimeter	0-4.0 ppm Cl/0.03 ppm, DPD Tablets	100	NH (4)	
3240-LI	Digital Colorimeter	0-4.0 ppm Cl/0.03 ppm, DPD Liquid	100	R1 (5)	

\*EPA Accepted for NPDR; †Requires use of UV lamp; C: ⚠️ WARNING: Cancer - www.P65Warnings.ca.gov R: ⚠️ WARNING: Reproductive Harm - www.P65Warnings.ca.gov  
 Ship Codes: [NH] Non-Hazardous Material - No Fees · [R1] Small Qty. Hazardous Material - No Fees · [R2, R3, & LQ] Hazardous Material - Air Fees Only · [HF] Hazardous Material - Air & Ground Fees  
 Direct Reading Titrators have a specific range, but may be refilled to test higher concentrations.



# Individual Test Kits



## Shipping Codes & Weights

Shipping codes and weights for shipping are included in this catalog for your convenience. The shipping code will refer to one of the following in this chart. Weight will be in pounds and enclosed in [ ].

Shipping Code	Description
NH	Non Hazardous, No Fees
HF	Hazardous Materials, Air & Ground Fees
R1	Small Quantity Hazardous Materials, No Fees
R2, R3, & LQ	Hazardous Materials, Air Fees Only

Code	Test Method	Range/Sensitivity	# Tests	Shipping Codes (weight/lbs.)	Health Hazard
<b>Chlorine Bleach</b> Higher concentrations of chlorine require the iodometric titration, whereby the sample is acidified and iodide is added, which is oxidized by chlorine to iodine and is titrated with a standard thiosulfate solution.					
7894-01	Dropper Pipet	1 drop = 0.005%, 0.05%, 0.5% Cl	50 at 10%	R1 [1]	
<b>Coliform</b> Kit 4-3616 uses five tubes, each containing a nutrient tablet. Reacted tubes are stored at room temperature for 48 hours and examined for color change and gas formation. Kit 3-0016-UV has a MUG reagent to make the <i>E. coli</i> bacteria fluoresce. (see more info on page 13)					
4-3616	Total Coliform	Presence/Absence	1	NH [1]	
4-3616-UV	Total Coliform and <i>E. coli</i> bacterias	Presence/Absence	1	NH [1]	
3-0041	Total Coliform and <i>E. coli</i> bacterias		20	NH [3]	
<b>Copper</b> A yellow color is formed when copper reacts with diethyldithiocarbamate [DDC]					
6616-01	LRC Comparator	0.0, 0.05, 0.1, 0.15, 0.2, 0.3, 0.4, 0.5 ppm Cu, 0-5.0 with dilution	50	NH[1]	C, R
<b>Hardness</b> EDTA titration is used for all hardness determinations with a red to blue endpoint. Total hardness buffers include inhibitors to eliminate metal interferences. All results are as CaCO <sub>3</sub> ; some kits also express results as gpg. The -LT suffix indicates a liquid buffer and tablet indicator.					
4482-LI-02	Dropper Bottle for Total Hardness (all liquids)	1 drop = 10 ppm or 1 gpg as CaCO <sub>3</sub>	50 at 200 ppm or 20 gpg	R1 [1]	R
4482-LT-02*	Dropper Bottle for Total Hardness (liquids and tablets)	1 drop = 10 ppm or 1 gpg as CaCO <sub>3</sub>	50 at 200 ppm or 20 gpg	R1 [1]	
3037-DR-01*	Direct Reading Titrator for low range Total Hardness	0-10 ppm as CaCO <sub>3</sub> in 0.2 ppm increments	50 at 10 ppm	R1 [1]	R
<b>Iron</b> Bipyridyl is a ferrous iron indicator that tests total iron after any ferric iron is reduced to ferrous in the sample. Ferrous and ferric may be tested separately using Kit 3347.-01					
4447-01	Octa-Slide 2 Comparator for Total Iron	0.5, 1.0, 2.0, 3.0, 4.0, 6.0, 8.0, 10.0 ppm Fe	90	R1 [1]	
7787-01	LRC Comparator for Total Iron	0.05, 0.1, 0.2, 0.3, 0.4, 0.6, 0.8, 1.0 ppm Fe	30	R1 [1]	C
3347-01*	Octa-Slide 2 Comparator for Total, Ferrous and Ferric Iron	0.5, 1.0, 2.0, 3.0, 4.0, 6.0, 8.0, 10.0 ppm Fe	50	R1 [1]	C
<b>Manganese</b> The 1-[2-pyridylazo]-2-naphthol(PAN) method forms an orange complex with manganese.					
3588-02	Octa-Slide 2 Comparator	0.0, 0.05, 0.1, 0.2, 0.4, 0.6, 0.8, 1.0 ppm Mn	50	LQ [2]	C, R

# Individual Test Kits



Code 5858-01

Code	Test Method	Range/Sensitivity	# Tests	Shipping Codes (weight/lbs.)	Health Hazard
Nitrate Nitrogen	The nitrate is reduced to nitrite by zinc and this undergoes diazotization/coupling to form a pink color. [see also nitrate test strips, page 6]				
3354-01	Octa-Slide 2 Comparator	0, 1, 2, 4, 6, 8, 10, 15 ppm NO <sub>3</sub> -N	50	NH (2)	
pH	Indicators specific to a particular pH allow colorimetric determination.				
3353-01	Octa-Slide 2 Comparator	5.0, 6.0, 6.5, 7.0, 7.5, 8.0, 9.0, 10.0 pH	50	R1 (1)	R
5858-01	Octa-Slide 2 Comparators	3.0, 3.5, 4.0, 4.5, 5.0 5.5 6.0, 6.5 7.0, 7.5, 8.0, 8.5, 9.0, 9.5, 10.0, 10.5	100	R1 (1)	R
Sulfate	Barium forms a precipitate with sulfate. The turbidity from the precipitate is measured using a comparator.				
7778-01	Octa-Slide 2 Comparator	20, 40, 60, 80, 100, 120, 160, 200 ppm SO <sub>4</sub> <sup>2-</sup>	50	R1 (1)	
Sulfide	Uses the Pomeroy methylene blue method for analysis. [see also sulfide test on ColorQ, page 7]				
4456-01	Octa-Slide 2 Comparator for Total Sulfide	0.2, 0.5, 1.0, 2.0, 5.0, 10.0, 15.0, 20.0 ppm S=	50	R1 (1)	
4630	Total, Dissolved and Hydrogen Sulfide	1 drop = 1.0 ppm or 0.1 ppm S <sup>2-</sup> or H <sub>2</sub> S	70	LQ [10]	C
Tannin	Tungstophosphoric and molybdophosphoric acids are reduced by tannins to form a blue color.				
7831-01	Octa-Slide 2 Comparator	1, 2, 3, 4, 5, 6, 8, 10 ppm tannic acid	50	R1 (1)	

\*EPA Accepted for NPDWR C: ⚠️ WARNING: Cancer - [www.P65Warnings.ca.gov](http://www.P65Warnings.ca.gov) R: ⚠️ WARNING: Reproductive Harm - [www.P65Warnings.ca.gov](http://www.P65Warnings.ca.gov)

Ship Codes: [NH] Non-Hazardous Material - No Fees · [R1] Small Qty. Hazardous Material - No Fees · [R2, R3, & LQ] Hazardous Material - Air Fees Only · [HF] Hazardous Material - Air & Ground Fees  
Direct Reading Titrators have a specific range, but may be refilled to test higher concentrations.



Code 3354-01



## Total Coliform & *E. coli* Bacteria Test

Order Code 4-3616-UV • Shipping Code (weight/lbs.): NH [1]

A simple 5-tube method to indicate the presence or absence of Total Coliform & *E. coli* Bacteria in drinking water. *E. coli* produces fluorescent compound.



Code 4-3616-UV



- Presumptive test for Total Coliform & *E. coli* Bacteria
- NO incubation equipment required
- Results in 44-48 hours at room temperature (70° - 85°F) or 24-hours at 110°F
- UV light source included (365 nm)
- Portable, no accessory labware required
- Ideal test for well water and coliform breakthrough in distribution systems
- Independent laboratory tested (results available upon request)

## Coliform Screening Test

Order Code 4-3616 • Shipping Code NH [1]

A simple 5-tube method to indicate the presence or absence of Total Coliform Bacteria in drinking water.



- Presumptive test for Total Coliform Bacteria
- NO incubation equipment required
- Results in 44-48 hours at room temperature (70° - 85°F)
- 18-month shelf life
- Portable, no accessory labware required
- Ideal test for well water and coliform breakthrough in distribution systems
- Independent laboratory tested (results available upon request)
- Quantity discount for 8 and 24 kits

Code	Test System	Range/Sensitivity	# of Tests [# of Reagents]
4-3616-UV	Tableted nutrient based on 5 tube MPN	Presence/Absence	1 [1]
4-3616	Tableted nutrient based on 5 tube MPN	Presence/Absence	1 [1]





802 Washington Avenue · Chestertown · Maryland · 21620 · USA  
t: 800.344.3100 · +1 410.778.3100 · f: 410.778.6394 · lamotte.com

©2024 LaMotte Company · Printed in USA · Code 1650 · 02.09.2024

